

Attractions in the area DoWoli.com



Take an adventure into the world of Wolimierz, the Jizera Mountains and Upper Lusatia.

Wolimierz has only 300 inhabitants, but there are many agrotourism farms and beautiful houses here. Add to this the colourfulness of the inhabitants, the many artists living here and the interesting history, and you will find that our village is a unique place in

the whole country. We owe much of our multicolour to the Puppet Clinic Theatre, which is located at the Wolimierz station. Many years ago, its main seat was an inn and a common room in Wolimierz, but it burned down in a fire. On its foundations was built... our house, DoWoli.

Where did the name come from? Wolimierz residents often use the abbreviation when talking about their village. For example, "I'm going back to Woli today, at last!". The word "*dowoli*" means *freely* and *as much as you want* in Polish. We do our best to ensure that our guests experience rest and relaxation, good food and attractions in the area - as much as they want.

And while we are on the subject of attractions, it is time to show you, dear Guest, the beauty of our land. The list below is obviously not complete, it will develop and bud, I think, for many years to come. I invite you to immerse yourself in our world.

Piotr / Peter

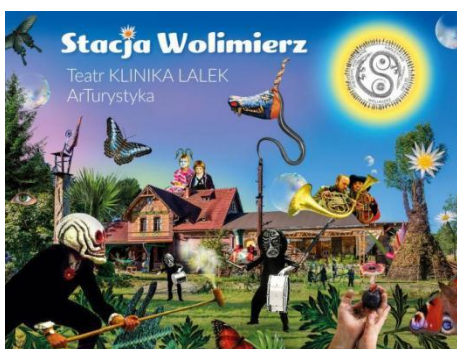


TABLE OF CONTENTS



Map of attractions

Swieradow cycling singletrack

SkyWalk Świeradów

Jakuszyce by bike and on foot

Gondola ride from Świeradów to Stóg Izerski

Winter attractions

Ski slopes and lifts

Jakuszyce in winter

Skiing attractions closest to us

Recommended maps and apps for terrain navigation

Hiking trails in the Foothills and the Jizera Mountains

Hiking routes from Wolimierz from our house

Other hiking routes in the area

Hiking trails from the Czech Republic

Cycling routes from DoWoli

Cycling routes from the Zajecznik single track car park

Canoeing

Castles

Cities and towns

Attractions in the Czech Republic

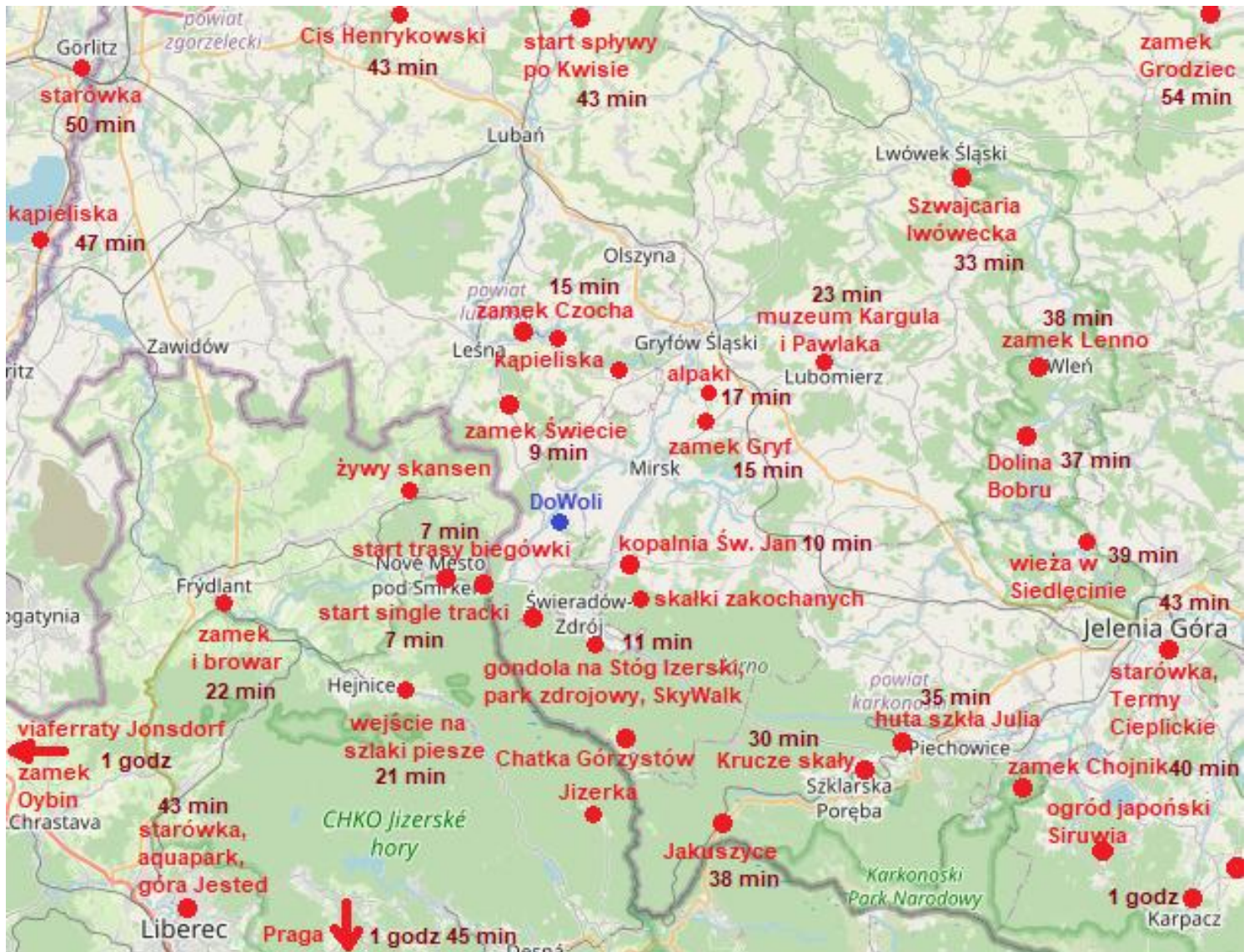
Beaches and water sports equipment at lakes

Workshops

Other attractions

Local products, animals, handicrafts

Map of attractions



Some of the attractions in our area described in the guidebook. In brown the travel time by car from DoWoli is given.



Bicycle single trails in Świeradów

Single track. A network of narrow forest paths for fast cycling. Tens of kilometers of routes supplemented with footbridges and bridges over rivers, cycling infrastructure. This sport in nature is gaining more and more enthusiasts. Spinning between the trees is a lot of fun, and at the same time the low inclination of the routes makes them safe even for novice cyclists. There is also a ski lift for downhill lovers on Stóg Izerski next to us, but this type of cycling is meant for experienced bikers. The slope and speed of the ride require more practice.

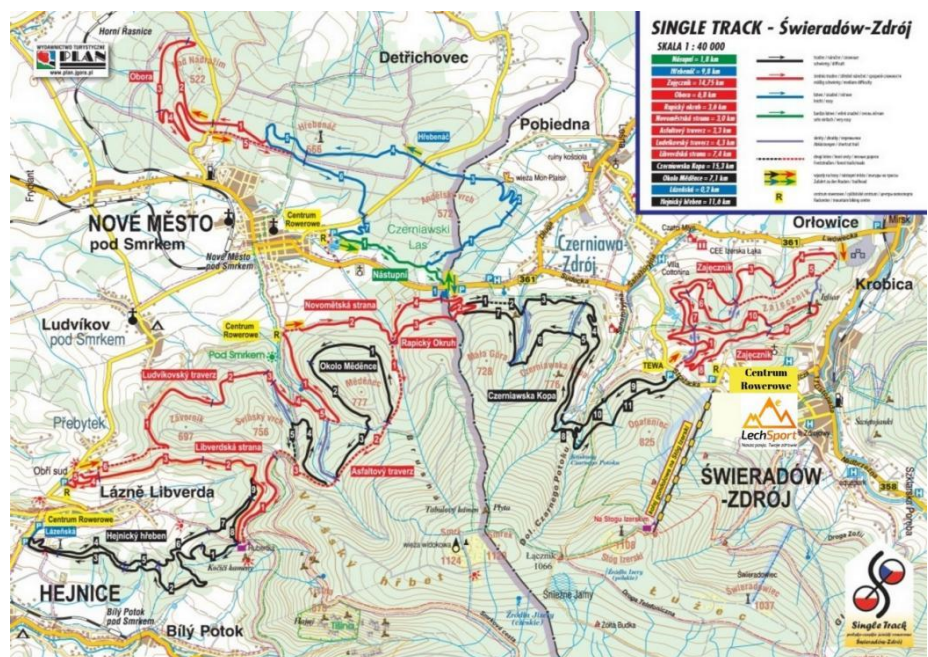
<http://singletrack.pl>

Access to the trails 9 minutes from us by car, 5 km.

Bike rentals:

- Pod Gondola. ul Źródłana / Strażacka, next to the lower station of the Ski&Sun gondola railroad. Tel. 733 250 747 , rezerwacja@podgondola.eu - electric and full bikes for 150 zł per day. Full bikes have shock absorbers in the front and rear. Mountain bikes with shock absorbers in the front, 80 zł per day. There is a discount on the gondola ride to Stóg Izerski www.podgondola.eu/wypożyczalnia-rowerow

- LechSport. Wczasowa 11 Street, Świeradów-Zdrój <https://lato.lechsport.pl/wypożyczalnia> Tel. 693 239 263 , info@lechsport.pl. Prices from 80 to 250 zł per day.



SkyWalk Świeradów

The first so large in Poland, opening in June 2021 <https://www.visitskywalk.today/>
15 min away by car.



Jakuszyce

35 minutes from us by car, start to the largest network of cross-country ski trails in Poland - 100 km of trails!

There are also excellent biking trails, a total of 450 km.

Several beautiful hiking trails start here, e.g. the green trail through Owczyste Skály to the mountain shelter on Hala Szrenicka (6 km, 2 h 6 min), to the Orle mountain shelter (5 km) and Chata Górzystów (10 km), to the Czech village of Jizerka (8.4 km).



Gondola ride from Świeradów to Stóg Izerski.

6.5 km away, 10 min drive.

We climb in cabins 500 m higher. The Ski&Sun gondola lift is open from 9 a.m. to 5 p.m. Price: 50 PLN normal ticket both ways, 40 PLN only up. Bicycles are allowed. More information <https://skisun.pl/cennik/>

Below interesting places and the time of access/access by bike to them from the upper cableway station.

SKI & SUN
ŚWIERADÓW ZDRÓJ

Nasze ulubione trasy po Górach Izerskich

Średni czas pokonania trasy z górnej stacji kolei gondolowej. Podany czas trasy w jedną stronę!

1. Wieża widokowa SMREK	1 h	40 min.
2. Wieża na Czerniawskiej Kopie	1 h 30 min.	1 h
3. Polana Izerska	1 h	40 min.
4. Punkt widokowy Palićnik	2 h	50 min.
5. Chatka Górzystów	1 h 40 min.	1 h
6. Stacja turystyczna ORLE	2 h 40 min.	1 h 25 min.
7. Kopalnia Kwarcu STANISŁAW	2 h 40 min.	2 h
8. Jizerka	3 h 15 min.	1 h 40 min.

UWAGA TRASA ROWEROWA na SMREK oraz PALIĆNIK (oprócz SMREK) jest trasą „wymagalną” z odcinkami po kamienicach i ze stromymi zjazdami.

Numer ratunkowy w Górach!
 112 | +48 601 100 300

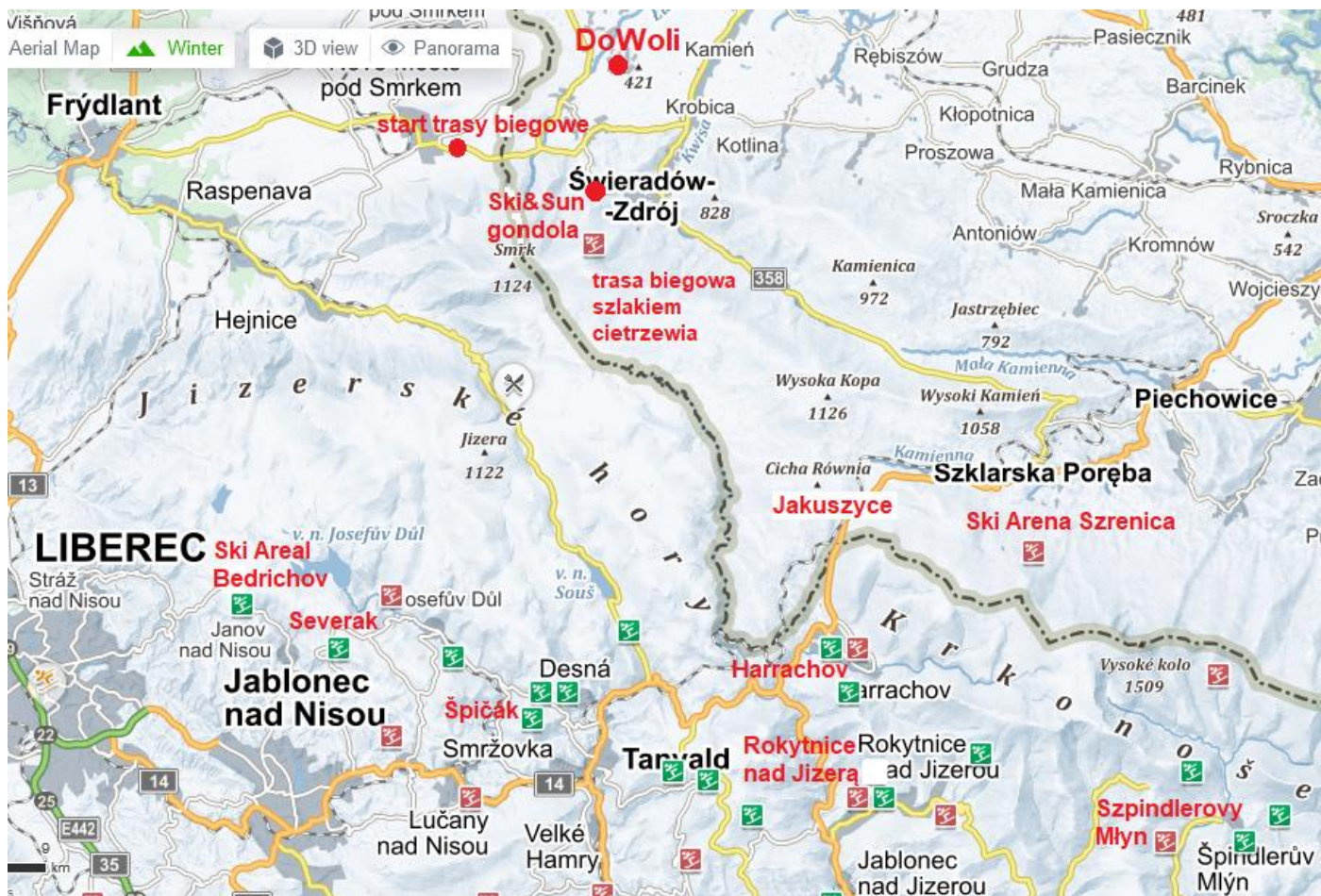
Source: <https://skisun.pl/lato/turystyka-piesza/>



Gondola and our house in summer

Winter attractions

The mountains offer a different kind of beauty each season. In winter, we can walk on trails (sometimes crampons come in handy for icy paths), go cross-country skiing, downhill skiing, use the local swimming pools and saunas, go walrushing, visit castles and towns, and so on.

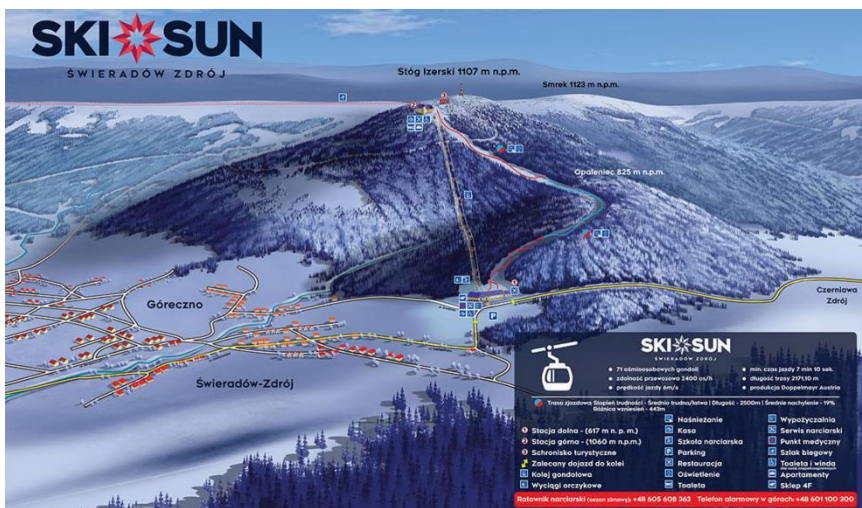


Our map of winter attractions, downhill and cross-country skiing

Ski slopes and lifts

You can check weather and riding conditions on the resorts' websites.

Ski&Sun Świeradów Zdrój, 7 min from us, gondola, day skiing 9.00-16.00, normal ticket 130 PLN, evening skiing 18.00-22.00, ticket 110 PLN, all day ticket 150 PLN, more on <https://skisun.pl/zima/>.



Ski Arena Szrenica Szklarska Poręba, 37 min, pass 8.30-16.00, normal ticket 121 zł,
<https://sudetylift.com.pl/zima/ski-arena/>

Ski Areal Harrachov, 45 min, open 8.00 am - 4.00 pm, evening skiing 4.20 pm - 8.00 pm, 4-hour pass 730 CZK, more at <https://www.skiareal.com/zima/>

Ski Resort Spicak - all-day ticket 770 CZK, Severak - 460 CZK, Bedrichov - 460 CZK,

<https://www.skijizerky.cz/pl/zima/tanvaldsky-spicak-severak-bedrichov>

Ski Areal Rokytnice nad Jizerou, 1 hour from us, all-day ticket 8.30 am - 4 pm, price 850 CZK <https://www.skiareal-rokytnice.cz/pl/> (map of ski slopes --->)

Ski Areal Špindlerův Mlýn, all-day ticket 910-1390 CZK, cheaper on the internet, <https://www.skiareal.cz/pl/>



Jakuszyce in winter

35 min from us by car, start on the largest network of cross-country ski trails

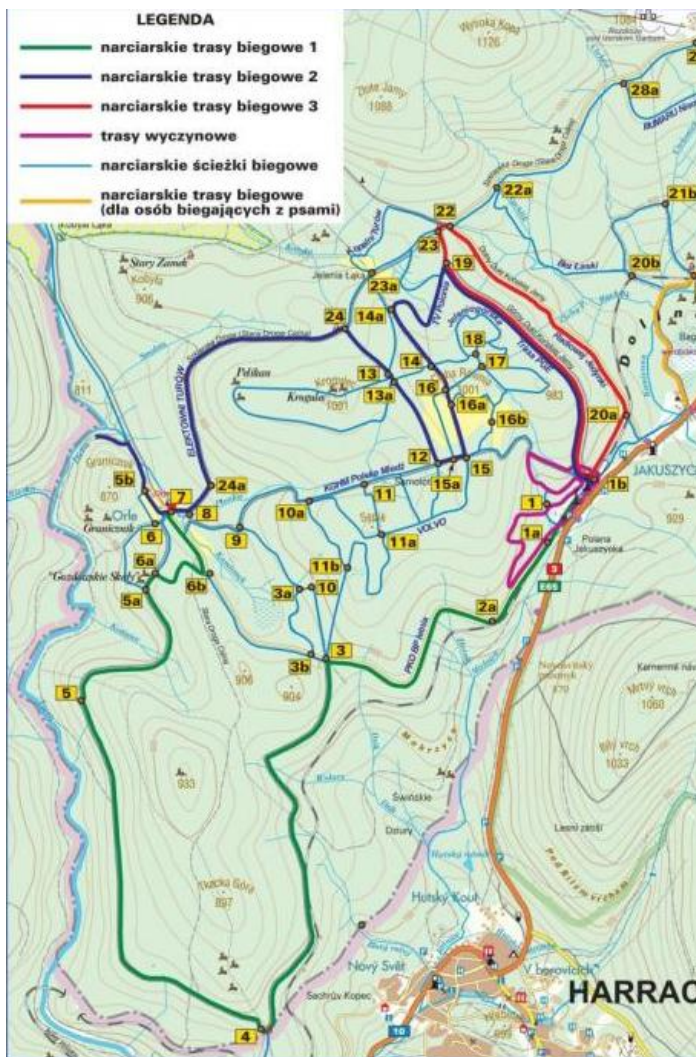
in Poland - 100 km of trails!

The famous Bieg Piastów takes place here.

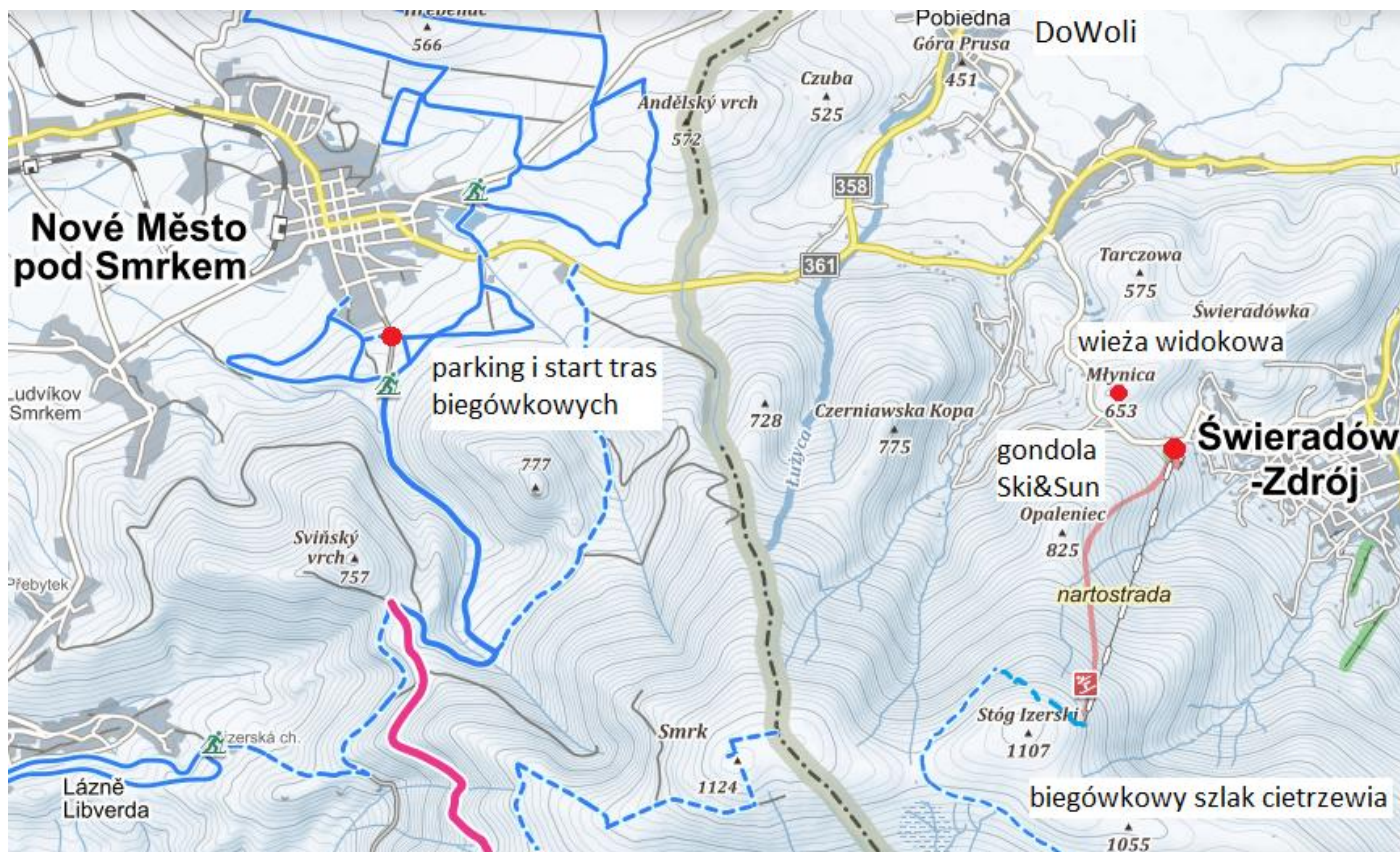
Rental of a set of skis, poles and boots, PLN 50 per day. Open 8.30 am - 6 pm.

- Fischer rental www.biegowkijakuszyce.pl

- Salomon rental www.stacjajakuszyce.pl



Skiing attractions closest to us



The map is downloaded from the [map.cz](https://www.map.cz) application, winter overlay. We write about the application on the next page.

The best place for **downhill skiing** is Świeradów. The Ski&Sun resort has a ski rental and a ski school. There are also other ski rental facilities next to the gondola.

The price for a set of skis, boots, poles (poles optional) is 45-60 PLN per day.

For **cross-country skiing**, we recommend trails starting in Nový Město or the Black Grouse Trail after ascending Stóg Izerský (gondola). You can rent cross-country skis at the LechSport rental shop <https://zima.lechsport.pl/> tel. 693 239 263 or at the Jizera Chata Restaurant. The trail from Nové Mesto connects to a large network of cross-country skiing trails near Liberec. The Jizera Black Grouse Trail and the trail from Nové Mesto connect with the Jakušice cross-country skiing trail network, which we also, of course, recommend.



For the brave, you can winter swimming next to us :)
On the Black Brook, on the Kwisá River, in Lake Leśniańskie or Lake Złotnickie.

Recommended maps and apps for outdoor navigation.

When walking in the mountains, you better forget about google maps. These maps have almost no mountain paths.

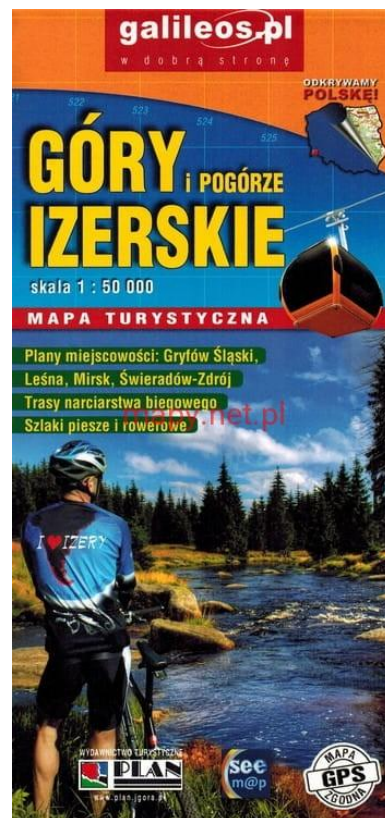
We recommend traditional paper maps (you can buy one in our house) or mobile applications Mapy.cz or mapa-turystyczna.pl.

Below you can see QR codes for Mapy.cz application, just load this code and you have whole route on your phone.

To save the route, you need to create an account in the application.

Click Sign up, then click the field Máte už e-mail u jiné služby?

Vytvořte si účet s ním.



Guests on the trails, the garden awaits

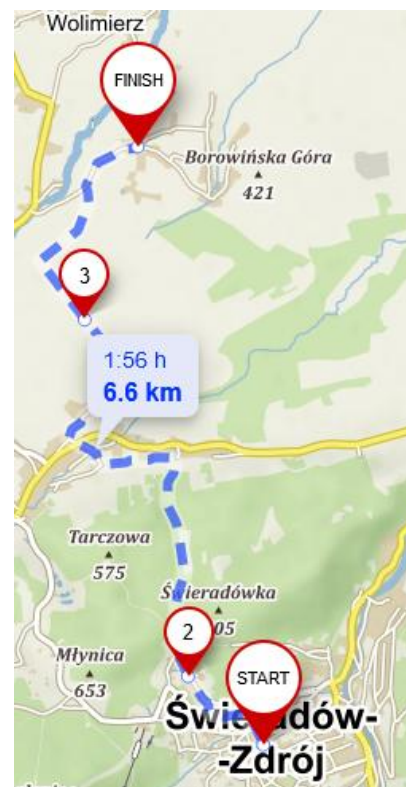


Cake with fruit from the DoWola garden

Hiking trails in the Foothills and Izera Mountains

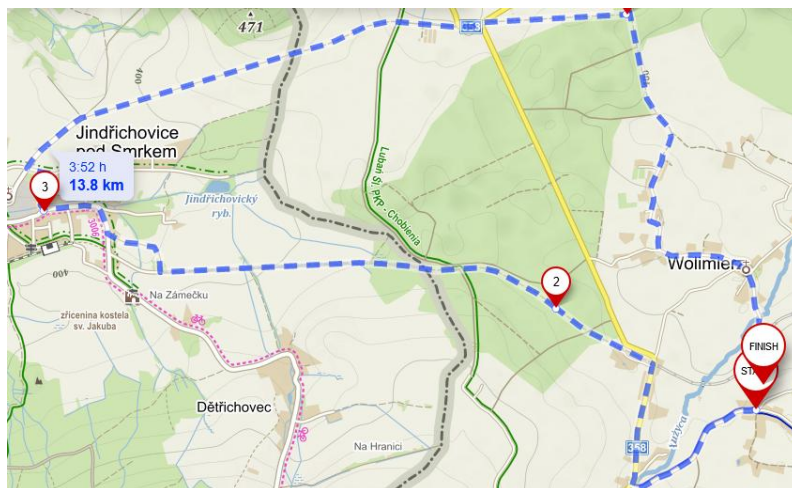
We like hikers very much, we are hikers ourselves. That is why if you come to us on foot you will get a discount on accommodation :) The shortest and most picturesque route to us from Świeradów Zdrój is 6.6 km long and takes about 2 hours, with almost no elevation gain (100 m, 200 m). From Świeradów go along Polna Street, join the black trail and go between the mountains of Zajęcznik and Tarczowa. In Łęczyn you will pass by Czarcie Młyn and leave the village along Wierzbowa Street to a dirt road. After walking a part of the route through meadows, we leave next to us on the red and blue trails, which will lead you to our house. Have a nice trip!

Recommended places to visit: Chata Górzystów (pancakes!), Orle Hostel, the Jizera River (e.g. on the way from Chata Górzystów to Orle), the summit of Wysoka Kopa, the closed quartz mine Stanislav, the village of Jizerka on the Czech side, Orzesznik (Ořešník) summit near Hejnice, Sępia Mountain above Świeradów.



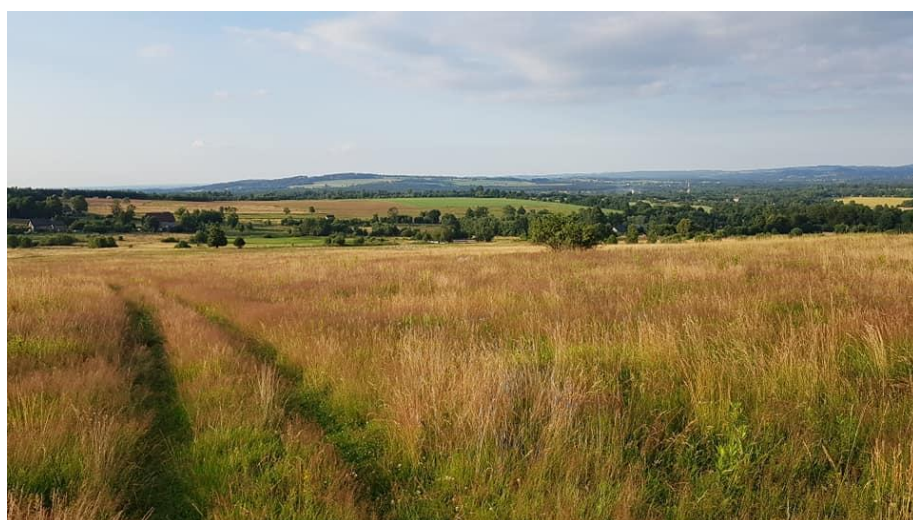
Hiking trails from Wolimierz from our house.

Through Sviatoslav forest to Jindřichovice (about 6 km) on the route of dismantled railroad, total return 14 km, about 4 hours. A hike on flat terrain.

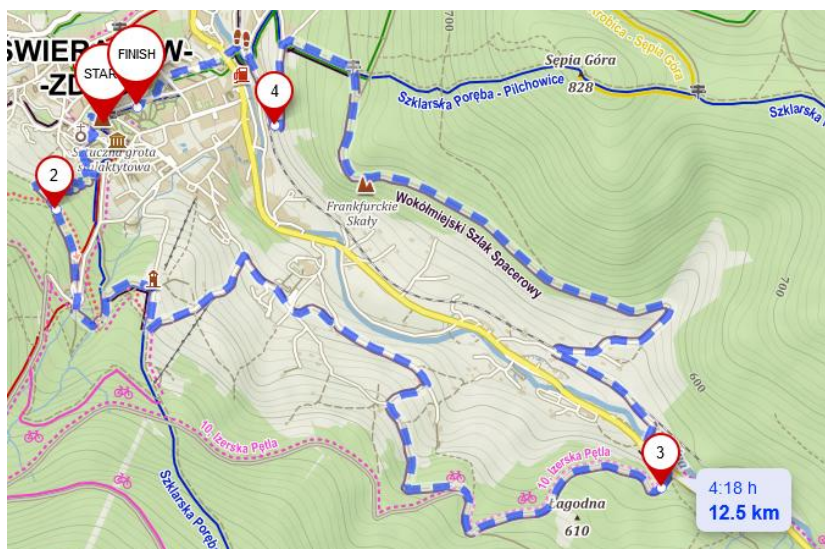


A loop through Czuba and past the Mon Plaisir tower, 8 km single loop to and from Pobiedna, 2 hours 20 min walk. Going out and coming back from Wolimierz, 12 km, about 3h 20 min (map opposite).

You have to walk up to the view marked with a yellow flag, you can also go back this way to Pobiedna (a very short version of the walk). Total ascent and descent: 230 m each



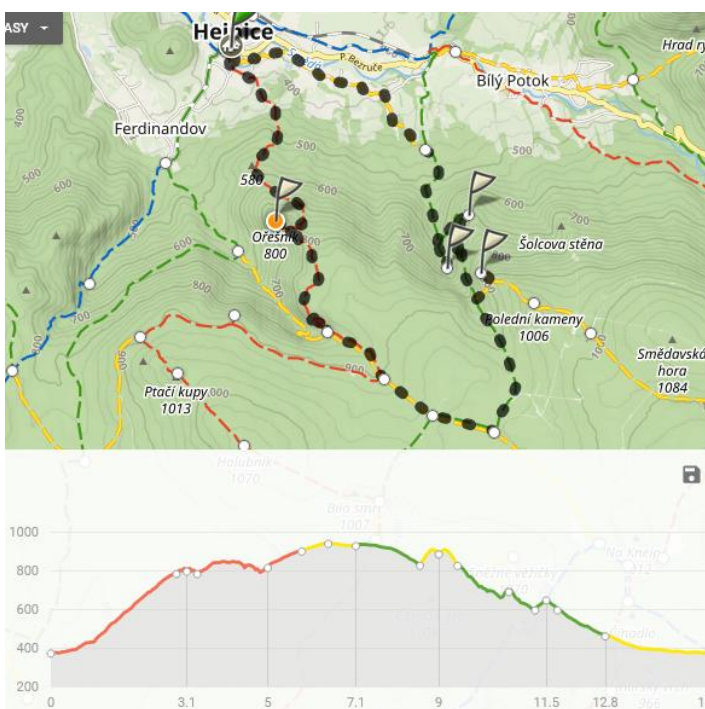
View on Wolimierz and Pobiedna from Czuba



Black trail from under the spa house in Swieradów.

Picturesque and not demanding route on the black trail. First we go near SkyWalk, views of Sępia Góra, descent near Kwisza waterfall, then viewpoint Świętojanki, return past the Station of Culture to the spa park.

12,5 km, total ascent and descent: 400 m each, walking time approx. 4 h 20 min



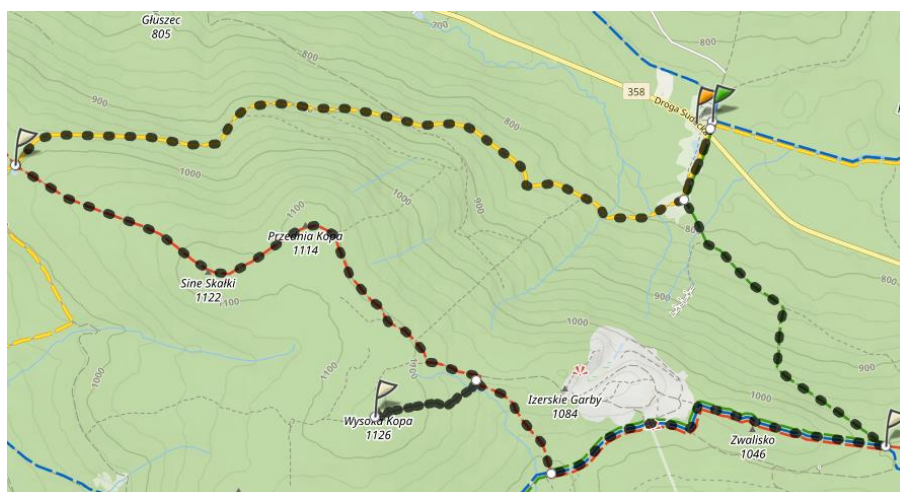
From Hejnice, Czech Republic, around Nové Mesto, 20 min drive:

Hejnice - Orzeszník - 3 viewpoints (Frýdlantské cimbuří, Vodopád Černého potoka, Vyhliídka Hajní kostel), 5 h 30 min, 15,5 km.

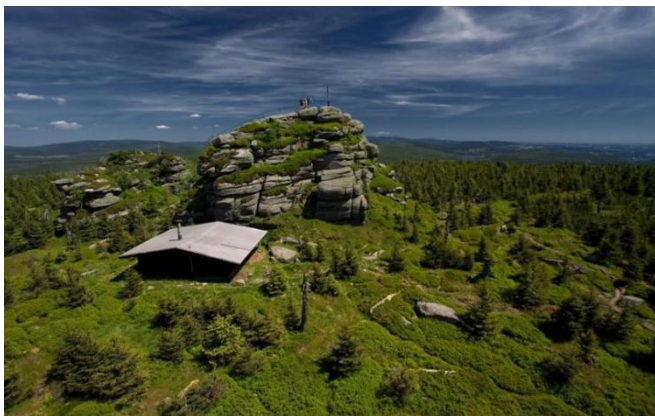
Total ascents and descents: 840 m each



Start and return to the **Jizera Crossroads**, via Vysoká Kopa, Sine Rocks, Stanislav quartz mine, 20 min. drive. About 4.5 hours, 15.5 km long. Total ascent and descent: 500 m each



Biking routes from DoWoli

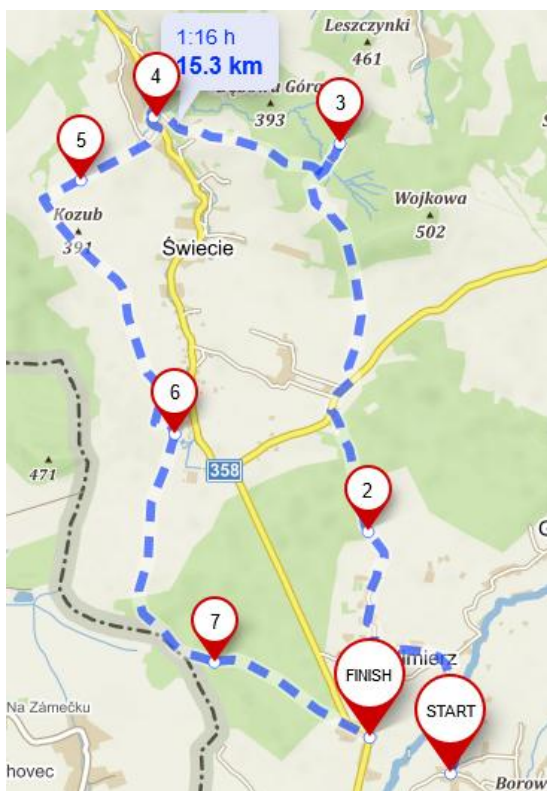


Jizera peak



Both of the following routes are full of beautiful views. They lead along hardly frequented trails, you will probably not meet other tourists there.

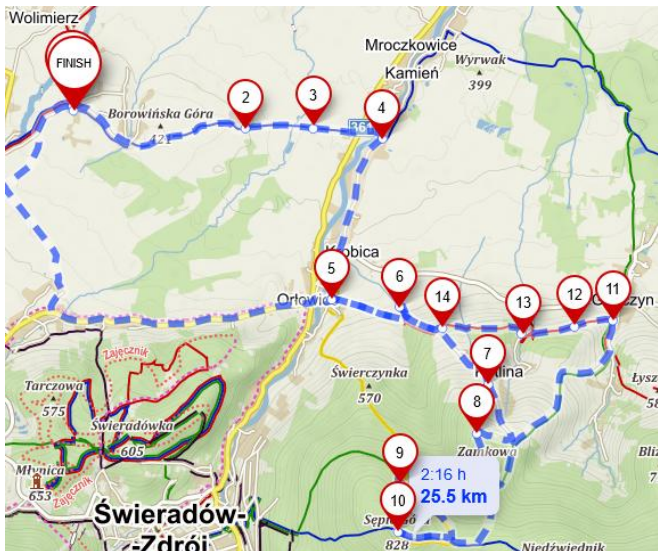
The route below, 15.3 km. This road is rather for an experienced cyclist, often overgrown with grass, field or forest. On the way we see the remains of the hunting house of the last owner of Czocho castle (no 3), the ruins of Świecie castle (4) - it is worth listening to the story told by the owner. We come back through the Świecie forest.



The second route extended by the Leśniańskie lake and the Czocho castle.

Length 28.3 km. Both routes will take longer than the time given on the schedule, because of the off-road route.





Trail of ancient ore mines, St. John's mine, lovers' rocks and Sępia Góra

We set off from home along the blue trail, taking in the panorama of the Jizera Mountains (2); after crossing the bridge over the Kwisia River, we turn onto the yellow trail (4). We reach the St. John's Mine (6), which we recommend visiting (prices and hours later in the guide). Then we climb up a steep road to the ruins of a former inn and to the Lovers' Rocks (8). After taking in the view of Wolimierz, we head to Sępia Góra (10) from where we have a panoramic view of the whole of Świeradów-Zdrój. Descend along the asphalt and then the forest road to Gierczyn and



return along the path of ore mining (signs of miners' picks on trees, 11-14). Tin was mined here for centuries. Length 25.5 km, 610 m, 610 m. en.mapa.cz/s/nodogepofe



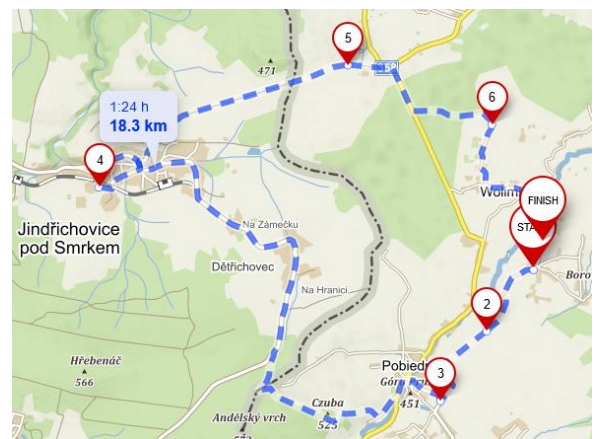
Pass through Pobiedna, before the border with Cechy we enter the forest. We arrive at Kocici kameny (2), from where there is a beautiful view and it is worth climbing the rocks. We continue below Smrk and can climb the lookout tower. We reach the Jizera Glade (4); if we have enough time, we can turn off to the nearby Mountaineers' Hut. Return through the suburbs of Świeradów and meadows to DoWola. At the single-track car park (5) you can turn off to the nearby viewing tower on Młynica.

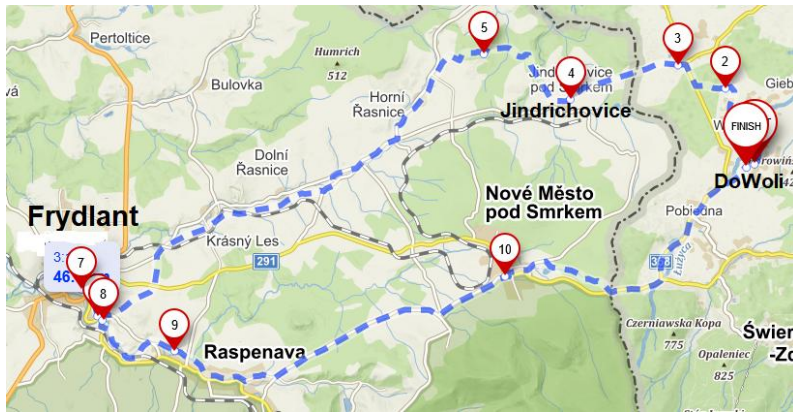


en.mapy.cz/s/pecozemudu

A picturesque route. We start from the house, take the dirt road to Pobiedna, pass a farm (3) on the left and leave by the palace. We then climb up to Czuba, from where Wolimierz is beautifully visible. Cross to the Czech Republic, take the cycle trail to Jindrichovice. You can stop at Restaurace u Dubu for a beer or a snack (4). On the cycling route with views we return to Poland, through the Swiecian forest back to Wolimierz.

en.mapy.cz/s/bosobejohu





DoWoli - Jindrichovice - Frydland - Nove Mesto. PA beautiful route with views passing through idyllic Czech villages. Lots of roads for bicycles only, no car traffic. In Frýdlant, we recommend going around the castle (6) and visiting it if it is open - beautifully preserved interiors! Then go to the market square (7).



Have lunch at the Albrecht brewery (8) with a delicious local beer.

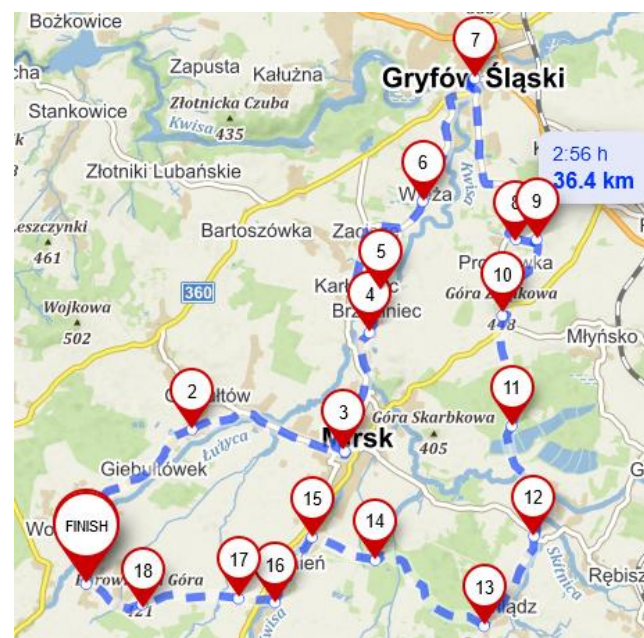
Route 46.5km, 500m elevation gain.

<https://en.mapy.cz/s/fenapezele>



DoWoli - Mirsk - Gryfów - Proszówka - Zamek Gryf - Stawy Młyńsko - Kamień

We start from the house and finish our tour here. In Mirsko (3) we can see the ruins of an Evangelical church, and have a good meal in the Paprotka restaurant (market square). Then we take the side roads to Gryfów Śląski (7). There you can have a bite to eat at the Coffee Street restaurant on the



market square. We return through Proszówka where there is an alpaca enclosure (8, description at the end of the guidebook) and a beautiful view from St. Anne's Mountain (9).

The next stop is the ruin of the medieval Gryf Castle (10). We return past the ponds through the woods and, towards the end of the tour, past the Kwisia River.

Route 36km, 680m elevation gain.

<https://en.mapy.cz/s/gopofupupe>



Canoeing

- By **Kwisa River**, best to start from Nowogrodziec, between Luban and Boleslawiec, 45 min from us (38 km).

- Through the **Leśniańskie and Złotnickie Lakes**, you pass by the Czocho Castle. The lakes are long and with beautiful views, there is more paddling than on a river (on a river the current helps).

- Rafting on the **Bóbr River**, you can for example just after the dam in Piechowice, then you cross the entire Bóbr Valley Landscape Park, 40 minutes by car, 31 km.

Prices for Kwisa: 60 zł per kayak per day + transport and pickup of all kayaks 150-250 zł. So for example, rafting Kwisa river for 10 people costs about 450 PLN (5 double kayaks x 60 zł = 300 zł + transport about 150 zł).



Ploučnice in Czech Republic, we propose very interesting part of the river from Tábořište Boreček campsite to Brennsky Mlyn. 15 km of very meandering river, many fallen trees, a lot of squeezing through narrow passages among branches, almost constant maneuvering. Adventure guaranteed :) The price is about 80 PLN for a one-day trip with a group of several people. The trip takes about an hour by car. Return from the end of the trip to the cars on ... modern push scooters.



Surrounding castles

Czocha, 14 min from us, visiting 10.00-18.00 and 10.00-20.00 in July and August, price 25 PLN. Night tour starts at 10 p.m., takes 3 hours, you have to sign up. One of the most famous castles in Poland, many movies and TV series were filmed here (The Cipher Fortress). Architecturally interesting and beautifully situated on the tip of a lake.

The ruins of Świecie castle, 9 min, entrance fee: 5 PLN, the owners speak interestingly about the renovation work in progress. You can wander around the ruins, from the cellars to the tower.

Frydland, 22 min, entrance 190 Kc (about 33 PLN), tour approx. 1,5 hours. A castle built on a rock, architecturally interesting, very well preserved rich living quarters. At the foot of the local brewery Albrecht with food and beer, you can visit the town of Frydland or stop on the way in one of the Czech hostels - Restaurace Delnak or U Mateje, Nove Mesto.

Rajsko, by the Lesniansky lake, 21 min, ruins of a castle converted into a hotel. Sometimes you can go inside and visit. If you notice a car parked in front of the castle and there are no visitors inside, it's worth trying and ringing the bell. If you don't manage to get inside, it is worth going around the castle from the right side, walking by the wall. Nice view of the lake from the slope.

Hojnik, 45 min, between Szklarska Poręba and Karpacz, beautiful views from the tower, in the Karkonosze National Park. Admission 7 PLN.

Lenno, 40 min, located at the foot of Wlen and the bend of the Bóbr river, beautiful view from the towers over the surroundings, below the Lenno Palace with an atmospheric café.



Czocha



Frydland



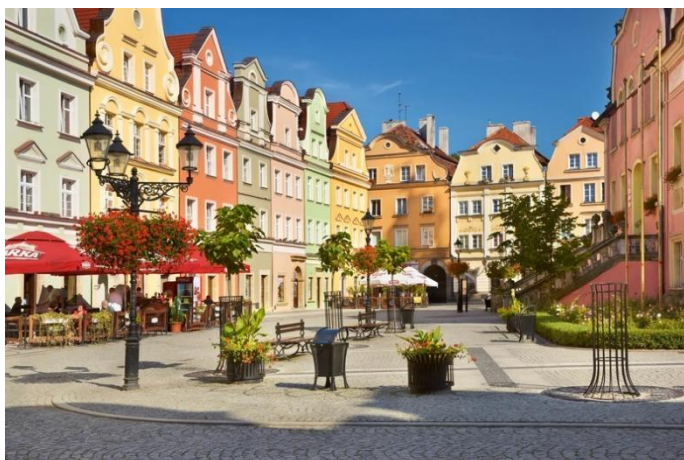
Lenno



Rajsko

Surrounding towns and villages

- Świeradów Zdrój (11 min), promenade, Zdrojowa Street, restaurants, spa house, spa park, mineral water pump room (by the spa park), spring for ladies and gentlemen, mineral water with radon, Sky Walk, gondola lift to Stóg Izerski, hiking trails in Izera, e.g. to the Mountaineers' Hut through Polana Izerska (6.6 km, 2 h 20 min)
- Görlitz, beautifully restored town, not destroyed during the war, on the Polish side Zgorzelec, 45 min
- Jelenia Góra, market square and surrounding streets, 40 min
- Bolesławiec, with famous Bolesławiec ceramics, you can buy it there, ceramics museum, longest railroad viaduct in Poland, 53 min.
- Lwówek Śląski and its brewery, quite good beer, tours of the brewery must be arranged in advance www.browarlwowek.pl/browar/muzeum-browarnictwa.html.
- Szklarska Poręba, Krucze Skały, entrance to many tourist trails in Karkonosze, 30 min.
- Karpacz, Wang Temple, promenade, entrance to Karkonosze trails, 55 min



Bolesławiec



Jelenia Góra



Görlitz



Świeradów Zdrój

Attractions in Czech Republic

Liberec (45 minutes drive), Bohemian Paradise (rock formations, castles, 1 hour drive), Bohemian Switzerland (1.5 hours drive). Of course Czech Jizera (e.g. picturesque village Jizerka) and Czech Giant Mountains.



Liberec



Jizerka



Czeski Raj



Czeska Szwajcaria

Lakeside beaches and water sports equipment

Leśniańskie Lake (landing place at Czocho Castle, 18 min), Złotnickie Lake (Złoty Potok beach, 14 min), Bersdorfer See (near Goerlitz) 45 min.



Złotnickie lake



Leśniańskie lake

Workshops



Glass Forge

Workshops on working with glass at szklanakuznia.pl.

- PLN 50 per person, duration approx. 1.5 hours, participants make and take away small handicrafts.
- PLN 100 per person, duration approx. 4 hours, work also in the workshop by the kiln. Participants make and take away larger handicrafts.



CeraMonic Ceramics Workshop

10 Nadrzeczna St., Świeradów Zdrój, the workshop lasts 1.5-2 hours, price PLN 60 per person, up to 10 people. After drying and firing, Ms Monika sends the products made during the workshop by post to the participants. Tel. 661 266 328



Yoga with the AgroYoga collective

We would like to invite you to a yoga class. They can take place at our house, in the garden or at the nearby Wolimierz Station (at the Station on Tuesdays and Fridays at 5 p.m.).

Price per person 30 PLN, classes last 90 minutes. The minimum fee for a group at our home is 300 PLN. www.facebook.com/AgroJogaKolektyw

Searching for agates in the Land of Extinct Volcanoes.

Under the supervision of an experienced geologist Marcin, you will search for agates and amethysts in a closed mine in Lubiechowa. After playing an open-pit miner you will go to the geological center where a professional saw will open your newly found treasures and you will find out what they hide inside :) Arrival 1 hour, duration of fun about 4 hours, price 40 zł per person. Contact: Marcin Jaskiewicz, tel. 796 113 103, www.warsztatygeologiczne.pl



Other attractions



Castle and monastery ruins in Oybin

1 hour from us, behind Bogatynia in Germany, lies the resort of Oybin and the ruins of a castle and monastery on the rocks. Several trails with beautiful views lead around them. The ruins have already inspired Romantic painters. Sightseeing time 2-3 hours, no shorter, well worth it :)

Saunarium, swimming pool and outdoor jacuzzi in the Malinowy Dwór.

Admission 65 PLN, weekdays 16.00-22.00, weekends 10.00-22.00.

www.malinowydwor.pl/strefa_wellness, by car 6 min.



Aquapark Termy Cieplickie

Swimming pools, saunarium, normal ticket prices from 36 PLN, there are family tickets, details on www.termyacieplickie.pl

By car 45 min.



Julia glassworks in Piechowice

A tour of the glassworks and observation of the process of handmade glass vessels and ornaments. The craftsmen blow and form the glass mass before the visitors' eyes. Normal ticket price 25 PLN. Details at

www.hutajulia.com. Travel time 37 min.

The Lower Silesia Miniatures Park in Kowary

The most beautiful monuments of Lower Silesia, Książ castle, the old town in Świdnica, Śnieżka and many others have been meticulously recreated. Lower Silesia in miniature :)

Regular ticket 33 PLN, www.park-miniatur.com



Black mill

a tour of an old mill, the history of bread baking, sometimes a baking workshop.

www.facebook.com/CzarciMlynSwieradow , 5 Lwówecka St., Świeradów-Zdrój

Ticket reservations tel. +48 574 110 170

Henryk yew

The oldest tree in Poland, approx. 1,300 years old, was 250 years old when the Polish state was born. 40 min drive (behind Leśna)



Guided tour, field games, tasting of local spirits

Get in touch with the local travel and adventure agency, DiscoverSilesia. They are made up of true enthusiasts of our region. They offer you sightseeing tours, walking tours, night walks and night sightseeing, field games.

Tasting of local beverages is also possible with us. This can take place, for example, around a campfire, accompanied by local stories. www.discoversilesia.pl, tel. 502 212 882

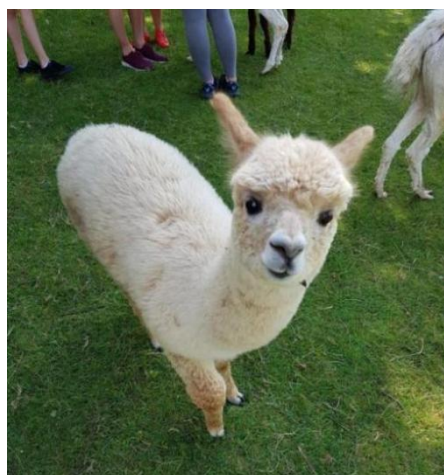


Local products, animals, handicrafts

Visit to a goat farm. Walking tour of the farm, cheese tasting. Giebułówek 77, 5 min away.
gminalesna.pl/syta-koza/



The alpaca farm in Proszówka, 17 min, for children and adults, feeding in the farm or a 30-minute walk along a picturesque trail in the neighbourhood.
www.alpakizproszowki.pl
Entrance 10 PLN. Walking 50 PLN. Proszówka 38, tel. 533 021 147



Catalog of other souvenirs and handicrafts (soaps, wood, ceramics, bags)
gminalesna.pl/katalog/produkty-lokalny/pamiatki/

Purchase of local products, honey, eggs, beer, preserves, liqueurs, jam
gminalesna.pl/katalog/produkty-lokalny/przetwory/





*Honey from Ryszard and curd from Tereska,
of course from Wolimierz :)*

A carriage ride around Wolimierz.

Mr. Waldemar will show you the most interesting places in the village and take you to the vantage point. Ride time is about 40 minutes. The carriage accommodates 5 people. Price 30 zł per person, min. 4 people.



... and many other attractions. Maybe you will discover something beautiful in our area?
Share it with us :)

Prepared and edited by: agrotourism DoWoli, Wolimierz 51
www.doWoli.com

